



Stoughton Health
900 Ridge St.
Stoughton, WI 53589
1-608-873-6611
stoughtonhealth.com

22 - 23 ANNUAL REPORT

CONNECT WITH STOUGHTON HEALTH

LIKE US on StoughtonHealth
FOLLOW US on StoughtonHealth
WATCH US on StoHosp
FOLLOW US on StoughtonHealth
VISIT US on stoughton_he

CALL US at 608-873-6611
EMAIL US at
pr3@stoughtonhealth.com

Learn More at **stoughtonhealth.com**

2022 - 2023 ANNUAL REPORT



HERE FOR YOU TODAY

Planning for Tomorrow



HERE FOR YOU TODAY

Planning for Tomorrow

Stoughton Health broke ground October 10th on the new Medical Outpatient Building slated to open Spring 2025. Based on careful analysis of current data, a plan was created to improve patient convenience, enhance workflow, and increase staffing to meet the growing demand for services. The building expansion will be a 56,000 sq. ft. facility, adjacent to SSM Medical Group Dean Clinic, and just steps from the main hospital location. In addition to space, this project begins a journey towards a greener campus by reducing electrical consumption by using solar panels.

This new facility space will allow Stoughton Health to do the following:

Create a Dedicated Space for Specialty Clinics

By bringing the clinics together in one location, service layout will be optimized, workflow improved, and enhanced convenience for patients and staff.

Expand Urgent Care Services

Over the last two years, urgent care visits at all three locations – McFarland, Oregon and Stoughton have increased substantially, with visits to the Stoughton Hospital location more than doubling. Moving Specialty Clinics to the new building will free up additional rooms for urgent care services.

Bring Stoughton Rehabilitation Services Back to the Main Campus

Stoughton Health currently has Cardiac and Pulmonary Rehabilitation in the hospital and the Stoughton Rehabilitation and Sports Medicine Services at an off-campus location. By providing all Stoughton Rehabilitation Services at one location, this will enhance satisfaction, safety, and convenience for patients and providers.

Prepare for the Future

The lower level of this new facility will include 24,000 sq. ft. of “shell space” to accommodate future growth. In addition, the building has been designed so another floor could easily be added should more space be required. Preparing for future growth now is the most cost-effective way to ensure that Stoughton Health will be able to continue achieving its mission to provide safe, quality healthcare with exceptional personalized service.

Many generous businesses, individuals, and foundations came together in six short months to raise over \$2 million of the approximate \$25 million needed for the building project. The momentum started with the Edwin E. and Janet L. Bryant Foundation, who were the first to pledge their support, followed by Keith and Tammy Anderson, Eldon Homes; Dr. Sarjoo Patel, BEAM Healthcare; Stoughton Rotary in honor of Dr. Don Beresky; Betsy McClimon, Wahlin Foundation; and Steve Peotter, President & CEO, One Community Bank.

A heartfelt thank you is extended to all who have contributed towards this new Medical Outpatient Building. Your dedication and support have helped us continue offering excellent healthcare services.

With Gratitude, *Daniel DeGroot*



Dan DeGroot
President and CEO,
Stoughton Health



Left to Right: Keith Anderson; Tammy Anderson; Betsy McClimon; Jerry Gryttenholm; Sarjoo Patel, MD; Dan DeGroot; Teresa Lindfors; Mayor Tim Swadley; Aaron Schwaab, MD; Steve Peotter; Ashish Rawal, MD; Liz Touchett



Stoughton Hospital Foundation Donors

Thank you to our sponsors, donors, and participants. We appreciate and value every gift. Your partnership with Stoughton Hospital Foundation provides essential resources to Stoughton Health so that they can continue offering the best healthcare with exceptional personalized service to our community. For the purpose of this report, we are recognizing those who have given a gift of \$250 or more during this past fiscal year. A sincere thank you to ALL of our donors.

1901 Inc.	Commonheart Home Health and Hospice	Dave and Mary Erdman	Madison Advanced Foot and Ankle, LLC	Jennifer Peterson	Stoughton Lions Club
Jim and Michelle Abey	Communications Engineering Company (CEC)	Thomas Fendrick and Shelley Moffatt	Madison Money Guy, Inc.	Pieper Electric	Dwayne and Tina Strandlie
Ghadeer S Alaffi	Complete Care of Nazareth	First Business Bank	Madison Newspapers Inc., dba Madison Media Partners	Stephen Pinckney and Deborah Ericson	Fred and Mary Sundby
Alliant Energy Foundation	Computer Management and Accounting (CMA)	Jerry and Judy Furseth	Bill and Bev Mansfield	Pizza Pit	Chris L Suttinger
AM Solutions	Conant Automotive	Jeff and Tammy Gassen	Matson and Associates, Inc.	Professional Collectors Corporation	Sveum Family
American Legion Post 59	Robert and Jodi Coon	Gordon Flesch Company, Inc.	Maxim Healthcare Staffing	Quarles and Brady LLP	Brian W Swain
American Tel-A-Systems Inc.	Creekside Place, Inc	Gunderson Funeral and Cremation Care	McDonald Schaefer	Quartz Health Solutions, Inc.	Tancill Investment Group of RBC Wealth Management
Keith and Tammy Anderson	Cress Funeral and Cremation Service	Dale R Hanson	Bill Weber and Laura McDonald-Mays	RHD Properties	TDS Telecom
Associated Bank	Culvers of McFarland	Amy J Hermes	McGlynn Pharmacy, Inc.	Matt and Laura Roethe	Thrivent Financial
Backus Family Foundation	Culvers of Oregon	Dan and Mary Hermes	Jerry and Jane McGuire	Rotary Club of Stoughton	Thysse Printing Service
Baker Manufacturing	Culvers of Stoughton	Holtan Charitable Remainder Trust	Jennifer Mora	Tim and Peggy Rusch	TOTAL Mechanical
John and Jessica Bauer	Dan and Tina DeGroot	Mark V Holzmann	Carina Moreland	Kial J Rushlow	Elizabeth Touchett
BEAM Healthcare	Leonard and Meredith Doom	Hope Rod and Gun Club	Patricia Murphy	Tom and Roberta Sarow	TRICOR Insurance
Lisa Bear	JP Dreyer	IMEG Corp	Dr. David and Ann Nelson	Christopher Schmitz	Lukas and Mikaela Trow
Lisa Becker	Jessica Duckwitz	Interior Investments	Clint and Jan Olson	Brad Schroeder	Melissa Trumm
Scott Blackledge	Erik and Sarah Ebert	J.F. Ahern Co.	Randy and Donna Olson	Dr. Aaron and Karen Schwaab	Viking Day Camp, LLC
Dr. Stephen and Danielle Boorstein	Edward Jones- Jessica Knutson	JP Cullen and Sons, Inc.	One Community Bank	Mike and Brenda Sherry	Rick and Nicki Wagner
Jim and Marsha Borling	Edwin E. and Janet L. Bryant Foundation	JPC Foundation	John and Martha Onsrud	Norman and Verjean Sime	Walmart
Terry and Carolyn Brenny	Eide Bailly LLP	Wade and Danielle Kapanke	Oregon Area Cares Community Coalition	Skaalen Nursing and Rehabilitation Center, Inc.	Troy and Lynn Wieser
Amy S Brown	Eldon Homes	Heather Kleinbrook	Outsource Inc.	Southern Wisconsin Emergency Associates, S.C.	Jim and Joan Wilcox
Sandra K Bryan Armstrong	Jessica Ellickson	Kris Krentz	Panther Exteriors and Contracting	Scott and Lynn Spangler	William M Wilson
James and June Bunting	Dana Ellis	Lakeview Modern Dentistry	Partners of Stoughton Hospital	Judson and Nancy Spooner	WISHIN
Gloria Carpenter	Michael Engelberger	Jonathan and Sylvia Lewis	Melanie A Pavolonis	Kevin and Renee Stokstad	Roger and Julie Wisinger
Allan and Eloise Christensen	Eppstein Uhen Architects (EUA)	Teresa Lindfors	Tom and Abby Pertzborn	Linda Stolen	WMSN-TV FOX 47
Carolyn Clow		David Locke		Stoughton Health	Walter and Tracy Wurtzler
Coldwell Banker Success- Peter Sveum		Louis F Fahey Survivor Trust			Yahara Dental
					Nora Ylvisaker

STOUGHTON HOSPITAL WELLNESS GARDEN



The Stoughton Hospital Wellness Garden and its peaceful surroundings positively affect the mood, stress level, and overall well-being of our patients, families, and all who visit. Metal sculptures and brick pavers are placed and available for purchase in memory or honor of your loved one. Stop by and view the sculptures in person at the Hospital Garden near the ambulance bays or indoors at the Community Health and Wellness Center where they are on display.



For more information, contact the Stoughton Hospital Foundation at (608) 873-2334 or foundation@stoughtonhealth.com.



2023 FOUNDATION BOARD MEMBERS



Jessica Pharo
President



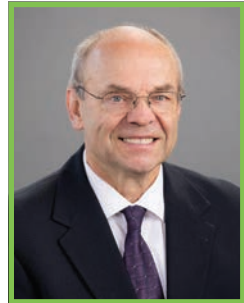
Tom Pertzborn
Vice President



Lukas Trow
Secretary/Treasurer



Brad Schroeder
Immediate Past President



Terry Brenny
Director



Carolyn Clow
Director



Judy Knutson
Director



Dr. Sarjoo Patel
Director



Matt Roethe
Director



Nicki Wagner
Director



Laura Mays
Executive Director



Taylor Harmel
Executive Assistant

Stoughton Health Services For YOU And YOUR Family

Stoughton Health accepts over 160 insurance plans including Dean Health Plan and Quartz.

BENEFITS OF ASKING FOR STOUGHTON HEALTH

- Quality care and service excellence
- Quicker access to many services
- Convenience of less time off work and less travel time for appointments
- Supporting Stoughton Health and keeping health care dollars local

NO REFERRAL NEEDED! (Mammography & PT/OT)

- Annual screening mammography
- Physical therapy and occupational therapy

(A physician referral is not needed with most insurances. At this time Medicare and Medicaid still require a physician referral. Our staff will verify insurance requirements.)

URGENT CARE CLINICS

McFarland Urgent Care Clinic
5614 US HWY 51 | 608-838-8242
M-F 8 a.m. – 8 p.m.
Sat & Sun 9 a.m. – 5 p.m.

Oregon Urgent Care Clinic
990 Janesville St. | 608-835-5373
M-F 5 p.m. – 10 p.m.
Sat & Sun 10 a.m. – 8 p.m.

Stoughton Hospital Urgent Care
900 Ridge Street | 608-873-6611
6 a.m. – 11 p.m. daily (including weekends & holidays)

MEDICAL CLINICS

Cardiology
Stoughton Hospital | 608-873-2349

General Surgery
Stoughton Hospital | 608-873-2266

OrthoTeam
Stoughton Hospital | 608-877-3419
2 Science Court, Suite 102, Madison
608-231-3410

Wound Care
Stoughton Hospital | 608-877-3400

REHABILITATION & SPORTS MEDICINE CLINICS

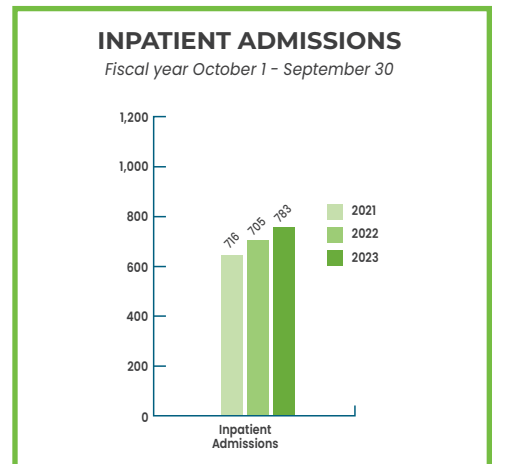
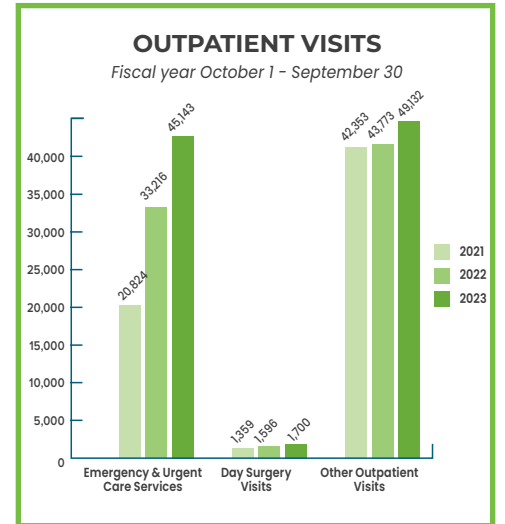
Stoughton Rehabilitation and Sports Medicine Clinic
2300 US Highway 51-138
Stoughton | 608-873-2292
(Located at the Stoughton Wellness and Athletic Center)

Oregon Rehabilitation and Sports Medicine Clinic
990 Janesville Street, Oregon
608-835-5373

Learn more about
Stoughton Health services
at stoughtonhealth.com

STOUGHTON HEALTH SERVICES

- Ambulatory Infusion Center
- Breast Care Services (screening, diagnostic, biopsy, surgery and physical therapy)
- Business Health and Wellness
- Cardiac and Pulmonary Rehabilitation
- Emergency Care
- Geriatric Psychiatry Inpatient Program
- Health Screenings (blood pressure, cholesterol and more)
- Lab
- Medical Imaging (bone density, CT, echocardiography and stress echocardiography, MRI, 3D mammography, nuclear medicine, stereotactic breast biopsy, therapeutic injections and ultrasound)
- Physical, Occupational and Speech Therapy
- Pulmonary Function Testing
- Respiratory Therapy/Cardiopulmonary
- Sleep Disorders Center
- Stress Testing
- Surgical Services – ENT, Colonoscopy/Endoscopy, General Surgery, Ophthalmology, Orthopedic, Pediatric Dentistry, Plastic, Podiatry and Urology
- Transitional Care – Swing Bed
- Vein Treatment (cosmetic and medical)



Results Matter

Patient Testimonials

“EVERY person who provided a service or care was – outstanding! Their medical expertise gave me confidence in the level of care and their kindness & pleasant demeanor made me feel cared for and encouraged.”

“Nurses were extremely compassionate and professional. As my mother’s POA, they kept me well-informed and involved in her care decisions.”

“Carin is an excellent, smart and caring physical therapist. SHE LISTENS. Have recommended her to many for treating vertigo & she has helped them too.”

“This was my first mammogram and I was nervous. Alison did a great job at explaining everything.”

“The whole experience was wonderful! So many caring compassionate people! Loved the small facility & Dr. Rawal was superb! Can’t say enough nice things about everyone!”

“All staff did an EXCELLENT job! Dr. Schwaab is the BEST!!”

2023 MEDICAL STAFF BOARD MEMBERS



Dr. Aaron Schwaab
Chief of Staff



Dr. Ashish Rawal
Vice Chief of Staff



Dr. Abigail Dahlberg
Secretary/Treasurer



Dr. Drew Dean



Dr. Guirish Agni



Dr. Deanne Eccles



Dr. Shawn McGuire



Dr. Mark Menet



Dr. Steven Diebold

Partners of Stoughton Hospital



Pumpkins on Parade



**Partners of Stoughton Hospital Officers
2022-2023**

Back Row (left to right): Jan Walker (Assistant Secretary), Sharon Beall (Secretary), Mary Haley (Membership Committee Chair), and Melanie Miller (President)

Front Row (left to right): Diane Williams (Gift Shop Committee Chair), Donna Strandlie (Treasurer), and Jeanne Gilbertson (Community Health Education and Events Committee Chair)

The Partners of Stoughton Hospital had another busy and successful year, creatively meeting challenges and raising the bar to what a dedicated group of individuals can accomplish.

Always looking for fresh and interesting ways to raise funds, the Partners held the new Pumpkins on Parade event in October at the Community Health and Wellness Center. The event featured pumpkins carved by local celebrities including the City of Stoughton Mayor and Drs. Rawal and Schwaab.

Also new this year was a very popular Flash Flower Sale held outside of Stoughton Hospital.

Many other fundraisers were held over the year including the pansy sale, mum sale, spring card party, monthly cookie bakes and four dates of selling items at the Stoughton Community Farmer’s Market. Love Light continued to evolve, this year returning to in-person and held at Christ Lutheran Church with the theme of “Inner Peace.”

This fundraising allowed the Partners to provide Stoughton Health and the community with some very generous gifts including new parking lot lighting at the Community Health and Wellness Center, Medfusion pumps and new office chairs for emergency department. Additionally, the partners sponsored March Match with a \$10,000 match, funded the annual scholarship for an individual going into healthcare and donated a cookie oven to the Neighborhood Free Clinic so they could hold their own cookie bake fundraisers. Total dollars donated was over \$26,000.

Beyond fundraising, the Partners continued to make walker bags for rehab patients and twiddle muffs for geriatric psychiatry patients, participated in coalition activities including the twice a year medication disposal and sharps collection event.

Their volunteer hours were also instrumental in operating the much-loved Partners of Stoughton Hospital Gift Shop.

In Spring, the Partners hosted a Spring Gathering and Volunteer Appreciation Event at the Stoughton Country Club with over 50 Partners and volunteers attending. The event included speakers, food and fun activities.

At the Stoughton Hospital Foundation’s Community One Mile Walk in June, the Partners were honored for the dedication and support of the Foundation, Stoughton Health and the community.



Enhancing the Care and Services YOU Want

THANK YOU TO OUR 2023 STOUGHTON HEALTH GOVERNING BOARD



Donna Olson
Board Chair



Tim Rusch
Vice Chair.



Steve Staton
Secretary/Treasurer



Dr. Aaron Schwaab
Chief of Staff



Dr. Ashish Rawal
Medical Staff Rep



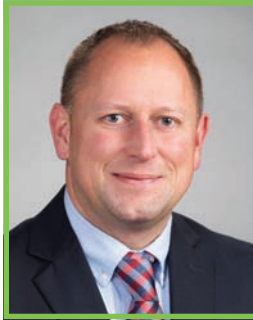
Dawit Tesfasilassie
SSM Rep



Matt Kinsella
SSM Rep



Tom Fendrick
Director



Kris Krentz
Director



Glenn Kruser
Director



Nick Probst
Director



Sue Vanderbilt
Director

MISSION

The mission of Stoughton Health is to provide safe, quality healthcare with exceptional personalized service.

VISION

We grow to meet the changing needs of the communities we serve and become their health partner of choice.

VALUES

Our patients and community are our number one priority. Employees are committed to providing Excellence Together through:

**ATTITUDE | ACCOUNTABILITY
APPEARANCE |
COMMUNICATION
TEAMWORK | SERVICE**

Making a Difference

Before going to the OrthoTeam Clinic for his Conformis knee replacement, David Eppihimer described his knee pain as “excruciating.” Anything he did was uncomfortable.

After doing some internet research, David came across Dr. Rawal.

“My experience going to the OrthoTeam was a ten. It was phenomenal. They seemed to genuinely care.”

When arriving at Stoughton Hospital for his surgery, the staff was equally wonderful. “They just seemed to go beyond to make you comfortable and tend to your needs,” David shares.

Once David got to physical therapy, his physical therapist always made sure he was progressing and felt confident when it was time to go back to work.

“After having Conformis knee [surgery] I have no pain. I’m walking, I’m driving, I’m going to the gym every day,” adds David. “I feel like I could be in my twenties.”

For information on the Conformis knee replacement, please visit orthoteam.com or call (608) 877-3419.



*Orthopedic Patient
David Eppihimer*



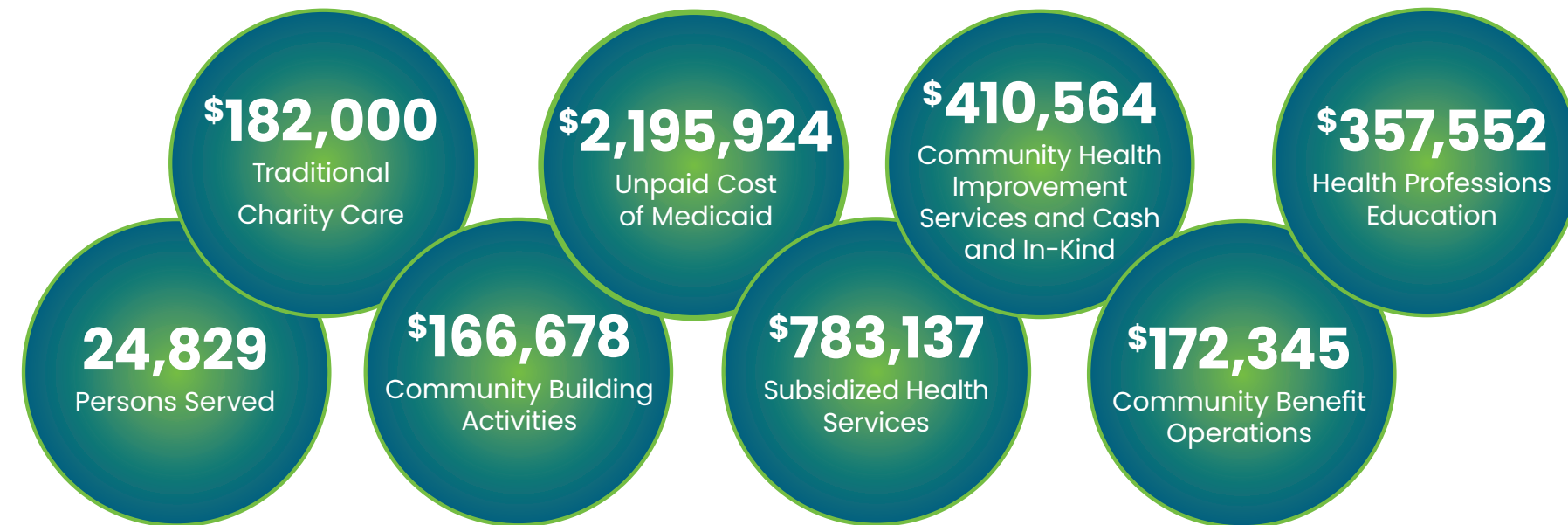
Rehab Team

To see any hospital’s HCAHPS results, go to the Hospital Compare website at www.medicare.gov/hospitalcompare.

Percentage of patients who reported “Always” related to each question.

MEASURE DESCRIPTION	Stoughton Hospital	Wisconsin Average	National Average
Patient survey summary star rating. More stars are better	5 out of 5 stars		
Patients who reported that their nurses “Always” communicated well	86	79	82
Patients who reported that their doctors “Always” communicated well	88	79	81
Patients who reported that they “Always” received help as soon as they wanted	76	65	69
Patients who reported that staff “Always” explained about medicines before giving it to them	76	61	65
Patients who reported that their room and bathroom were “Always” clean	91	72	76
Patients who reported that the area around their room was “Always” quiet at night	75	62	65
Patients who reported that YES, they were given information about what to do during their recovery at home	93	86	89
Patients who “Strongly Agree” they understood their care when they left the hospital	62	51	55
Patients who gave their hospital a rating of 9 or 10 on a scale from 0 (lowest) to 10 (highest)	82	70	75
Patients who reported YES, they would definitely recommend the hospital	83	69	72

Giving Back To Our Community



COMMUNITY BENEFIT: OCTOBER 1, 2021 – SEPTEMBER 30, 2022

\$4,268,200



Gazebo Musikk Night



Food 4 Kidz



Dietitian Approved Grocery Store Tour



Blood Drive

Award Winning Stoughton Health



Stoughton Health Receives Five Star Rating

According to the recently released Overall Hospital Quality Star Ratings from the Centers for Medicare & Medicaid Services (CMS), Stoughton Hospital has a five star rating. The ratings reflect 46 measures across five categories of quality: mortality; safety of care; readmissions; patient experience; and timely and effective care.



Stoughton Health is a Madison Favorite

Thank you to everyone who voted for us! Stoughton Health earned People's Choice favorite designation for hospital, medical imaging/diagnostics center and rehabilitation facility!



Stoughton Hospital has earned The Women's Choice Award®

Stoughton Hospital has earned The Women's Choice Award® as one of the 100 Best Hospitals for Patient Experience. The award identifies the best hospitals nationwide that are women-friendly.

The Women's Choice Award is the only national award recognizing hospitals based on the recommendations and preferences of women.



Stoughton Hospital Earns "A" for Social Responsibility on National Ranking

Stoughton Hospital has been recognized by the Lown Institute for outstanding social responsibility, receiving an "A" grade on the 2023–24 Lown Institute Hospitals Index. The hospital ranked eighth out of 106 hospitals in Wisconsin. According to the Index, Stoughton Hospital also received "A" grades in Value of Care, Patient Outcomes, Clinical Outcomes, Patient Satisfaction, and Cost Efficiency. These are independent rankings and hospitals do not apply or pay to be listed.



Stoughton Health receives the 2023 Advocacy All-Star Award, recognizing their strong commitment to health care public policy and advocacy from the Wisconsin Hospital Association.