

YOUR Health • **YOUR** Happiness **YOUR** Community Hospital



PRESIDENT'S LETTER



Well into my first year at Stoughton Hospital, I remain extremely appreciative for being given the opportunity to lead this astounding organization.

As you will see throughout the report, we ended our fiscal year 2018 with many proud accomplishments to meet the changing needs of the communities we serve. With the addition of Dr. Ashish Rawal, Orthopedic Surgeon, we

were able to open a second clinic location at Stoughton Hospital. In order to provide earlier breast cancer detection for our patients, we implemented 3D imaging in mid-May. This fall, Dr. Aaron Schwaab began offering a minimally invasive treatment for gastroesophageal reflux disease, allowing patients to return home earlier with improved results. Looking to the future, we plan on expanding gynecology services to serve women in all transitions of life.

Additionally, our community involvement and sponsorships have increased with participation in Syttende Mai Parade, blood drives, medication disposal events, Food for Kidz, American Heart Walk®, Alzheimer's Association®, American Cancer Society Relay for Life®, Dementia Friendly efforts and more. Our commitment to your health and our community will continue to grow with even more screenings and strategies being planned for the upcoming year.

I am extremely pleased with the successes to date, grateful for the people I've met, and impressed with the hard work of our dedicated physicians, staff, volunteers, Boards and Partners. I look forward to building relationships in the communities we serve and am excited about the opportunities ahead.

Gratefully,

Dan DeGroot

President/CEO

MISSION

The mission of Stoughton Hospital is to provide safe, quality healthcare with exceptional personalized service.

VISION

We grow to meet the changing needs of the communities we serve and become their health partner of choice.

VALUES

Our patients and community are our number one priority. Employees are committed to providing Excellence Together through:

Attitude

Communication

Accountability

Teamwork

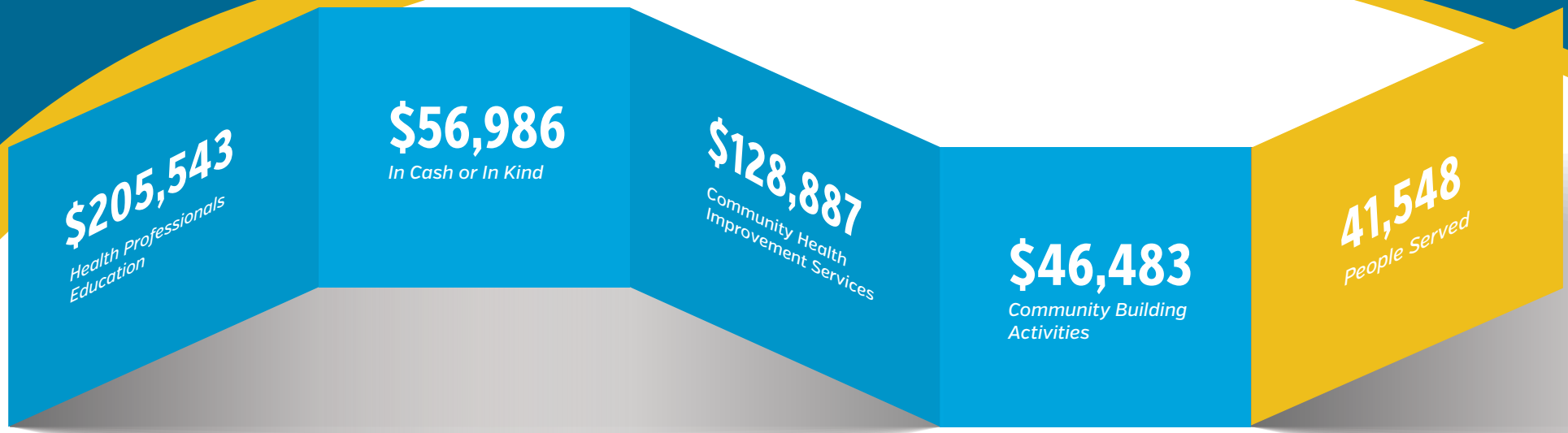
Apppearance

Service

A photograph of the Stoughton Hospital building, a modern multi-story structure with large glass windows. The hospital's name and logo are visible on the upper part of the building. The image is partially obscured by a large yellow curved graphic element on the left side of the page.

Stoughton Hospital

GIVING BACK TO OUR COMMUNITY



Our commitment to the community goes beyond our hospital walls. We bring health to you with special events, support groups, health fairs, blood drives, medication disposals, classes, community sponsorships, advocacy, health screenings and more! We work hard to be Your Partner in Health.

COMMUNITY BENEFIT
OCTOBER 1, 2016 -
SEPTEMBER 30, 2017

\$2,830,705



Meet Our New **PROVIDERS**

Offering You the Best Care Possible



Ewa Alexander, MD
SSM Health-Stoughton
Sleep Disorders Center



Amy Connell, MD
Stoughton Hospital
Geriatric Psychiatry



Joel Mendelin, MD
Associated Pathologists
Pathology



Ashish M. Rawal, MD
Stoughton Hospital OrthoTeam Clinic
Orthopedic Surgeon & Sports Medicine

STOUGHTON HOSPITAL ASSOCIATED PROVIDERS

EMERGENCY MEDICINE

Stoughton Hospital
Southern Wisconsin
Emergency Associates
Warren Tripp, MD, Director

FAMILY MEDICINE

SSM Health-Stoughton
Laura Flanagan, MD
Dean Kresge, MD
Daniel Staddler, MD

SSM Health-Evansville

Darcy Bedward, APNP
Renee Fohl, MD

UW Health Clinic-Verona Atrium

Derek Hubbard, MD

GASTROENTEROLOGY

SSM Health-Stoughton
William Ehrhardt, MD
Naree Whang, MD

GENERAL SURGERY

SSM Health-Stoughton
David Rainiero, MD

Stoughton Hospital Specialty Clinic-General Surgery

Marc Erickson, MD
Bill Kontny, MD
Jonathan McLaughlin, MD
Aaron Schwaab, MD

GERIATRIC PSYCHIATRY

Stoughton Hospital
Amy Connell, MD
Jeffrey Marcus, MD
Kenneth Robbins, MD, Director
Martha Rolli, MD

HOSPITALISTS

BEAM Healthcare
Sarjoo Patel, MD, Director

INTERNAL MEDICINE

SSM Health-Stoughton
Guirish Agni, MD

UW Health Clinic-Stoughton

Karen Griffin, PA-C
Ahsan Khalid, MD

NEUROLOGY

SSM Health-Stoughton
Mark Lanser, MD

OB GYN

SSM Health-Stoughton
Rebecca Faber, MD GYN
Mary Haag, MD GYN

OPHTHALMOLOGY

SSM Health-Stoughton
Stephen Boorstein, MD
Anne Kilby, MD

ORTHOPEDICS

SSM Health-Stoughton
Richard Rilling, MD
Tara Shaw, PA-C

Stoughton Hospital OrthoTeam Clinic

Renee Burke, PA-C
Ashish M. Rawal, MD
John S. Rogerson, MD

OTOLARYNGOLOGY (ENT)

SSM Health-Stoughton
Steven Lyon, MD

PATHOLOGY

Associated Pathologists
Joel Mendelin, MD

PEDIATRICS

SSM Health-Stoughton
Thomas Murwin, MD

UW Health Clinic-Stoughton

Anne Means, MD
Karen Pletta, MD

PLASTIC SURGERY

SSM Health-Stoughton
Clifford King, MD

UnityPoint Health-Stoughton

Jeffrey Larson, MD

PODIATRY

SSM Health-Stoughton
David Worth, DPM

RADIOLOGY

Madison Radiologists
Emily Norman, MD, Director

SLEEP DISORDERS CENTER

SSM Health-Stoughton
Ewa Alexander, MD
Jacalyn Nelson, MD

SPORTS MEDICINE

SSM Health-Stoughton
Deanne Eccles, MD

URGENT CARE

Stoughton Hospital
Urgent Care
Oregon Urgent Care
Southern Wisconsin
Emergency Associates
Warren Tripp, MD, Director

UROLOGY

SSM Health-Stoughton

Meeting Your Health Needs **LOCALLY**

Stoughton Hospital is committed to providing the right care, at the right time, close to home.

PATIENT TESTIMONIALS

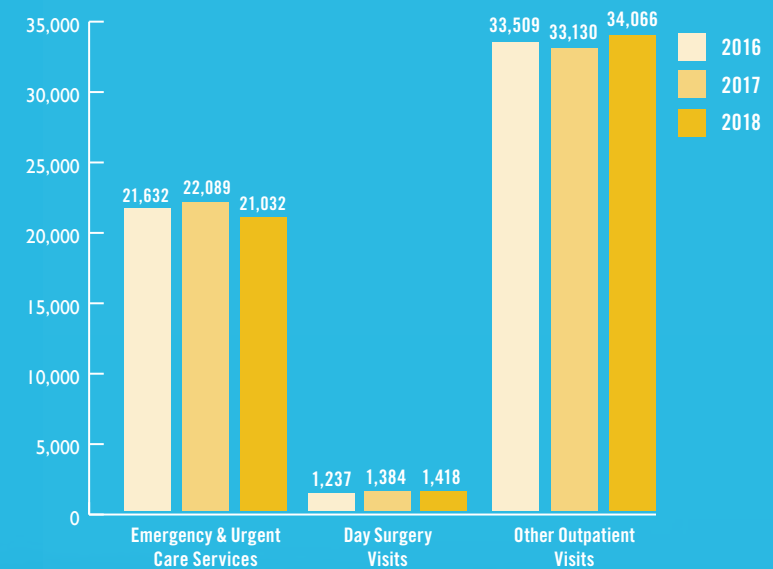
"I love Stoughton Hospital. It's clean and bright and has excellent staff! I would recommend this facility to anyone."

"Stoughton Hospital is a gem in our community. Local top-rated care has been received by my husband on two separate occasions and the hospital team was so kind, caring and attentive. We would not go anywhere else."

"The overall experience from start to finish was basically perfect. It would be a model of how I wish more health care related interactions would be everywhere."

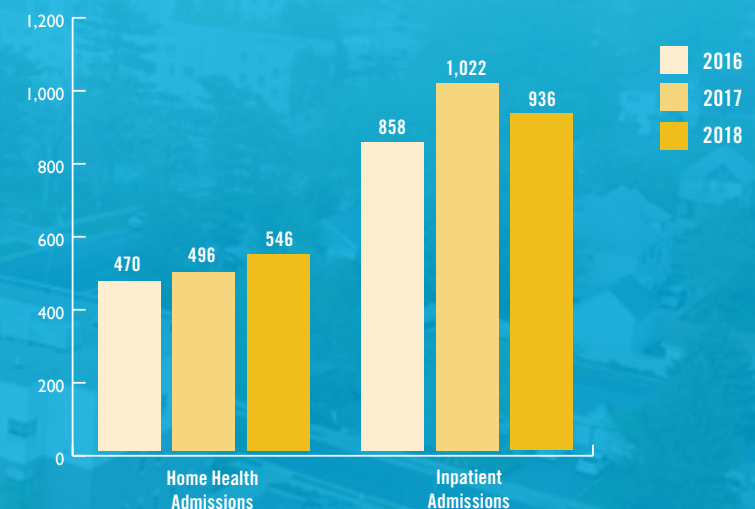
OUTPATIENT VISITS

Fiscal Year October 1-September 30



HOME HEALTH AND INPATIENT ADMISSIONS

Fiscal Year October 1-September 30



IT'S ABOUT THE EXPERIENCE

To see any hospital's HCAHPS results, go to the Hospital Compare website at www.hospitalcompare.hhs.gov.

Hospital Compare – Survey of Patients' Hospital Experiences

From the U.S. Department of Health and Human Services website (www.hospitalcompare.hhs.gov), Hospital Consumer Assessment of Healthcare Providers and Systems (HCAHPS) comparison scores – January 1, 2017, to December 31, 2017

Percentage of patients who reported “Always” related to each question

Measure Description	Stoughton Hospital	Wisconsin Average	National Average
Patient survey summary star rating. More stars are better.	5 out of 5 stars		
Patients who reported that their nurses “Always” communicated well	89%	83%	80%
Patients who reported that their doctors “Always” communicated well	88%	84%	82%
Patients who reported that they “Always” received help as soon as they wanted	74%	74%	70%
Patients who reported that staff “Always” explained about medicines before giving it to them	77%	69%	66%
Patients who reported that their room and bathroom were “Always” clean	91%	80%	75%
Patients who reported that the area around their room was “Always” quiet at night	74%	66%	62%
Patients who reported that YES, they were given information about what to do during their recovery at home	91%	90%	87%
Patients who “Strongly Agree” they understood their care when they left the hospital	63%	57%	53%
Patients who gave their hospital a rating of 9 or 10 on a scale from 0 (lowest) to 10 (highest)	83%	78%	73%
Patients who reported YES, they would definitely recommend the hospital	83%	76%	72%

LEADING THE WAY TO HEALTH

Stoughton Hospital Association 2017-2018 Board of Directors

Thank you to our community leaders for giving their time and skills to help the hospital achieve optimum health for the communities we serve.



BRIAN KAHL
Chair



DAN HANSON
Vice-Chair



TOM FENDRICK
Secretary/
Treasurer



DR. GUIRISH AGNI
Chief of Staff



DR. AARON SCHWAAB
Medical
Staff Rep.



SUE BERG
Director



JON ROZENFELD
Director



DEB SCHNEIDER
Director



DR. DANIEL STADDLER
Director



STEVE STATON
Director



KEVIN STOKSTAD
Director



KEN WAHLIN
Director

2017-2018 STOUGHTON HOSPITAL RECOGNITIONS



2018 Women's Choice Award – Recognized as America's 100 Best Hospitals for patient experience with hospitals of similar size.



2018 Women's Choice Award for Emergency Care – Recognized as America's 100 Best Hospitals for Emergency Care with hospitals of similar size.



HomeCare Elite® – Honors the top 25 percent of home health agencies in the country, measured by five categories: quality of care, best practice implementation, quality improvement and consistency, patient experience (HCAHPS), and financial performance.



2018 Press Ganey Guardian of Excellence Award® – For reaching the 95th percentile in four consecutive quarters for Patient Experience in the Outpatient Departments of Stoughton Hospital.

Partners of STOUGHTON HOSPITAL



Serving as goodwill ambassadors, the Partners of Stoughton Hospital provide volunteer assistance to Stoughton Hospital by supporting the mission of the hospital and striving to make a positive impact on patients and visitors.

The Partners fundraisers include:

- **COOKIE AND BAKE SALES**
- **GIFT SHOP CONTRIBUTIONS**
- **FLOWER SALES**
- **LOVE LIGHT CELEBRATION**
- **CARD PARTIES**
- **VALENTINE BALLOON DELIVERIES**
- **MAY DAY FLOWER DELIVERIES**

The Partners raised over **\$21,000** to generously support the Wellness Garden, Walking Trail, American Heart Association, Wisconsin Alzheimer's Association, Safety Camp, Breast Cancer Awareness and more. If you would like more information about becoming a partner, please call 608.873.2205 or visit www.stoughtonhospital.com.



Back, left to right: Claudia Quam, Becky Greiber, Sue Weum, Bev Mansfield, Helen Sumwalt
Middle, left to right: Norval Morgan, Sandra Maerz, Carol Deneen, Judy Simmonds
Front, left to right: Dawn Windland, Melanie Miller, Sharon Beall, Diane Matson, Linda Trunzo



2017-2018 OFFICERS

MELANIE MILLER
Executive Board – President

DIANE MATSON
Executive Board – Secretary

BEV MANSFIELD
Assistant Treasurer

SHARON BEALL
Executive Board –
Vice President

DAWN WINDLAND
Executive Board – Treasurer

SANDRA MAERZ
Past President

HELEN SUMWALT
Assistant Secretary

COMMITTEE CHAIRS

**CLAUDIA QUAM &
LINDA TRUNZO**
Fundraising

HELEN SUMWALT
Sunshine

CLAUDIA QUAM
Walking Trail

SUE WEUM
Gift Shop

**BECKY GREIBER &
JUDEEN REESE**
Love Light

NORVAL MORGAN
Public Policy

CAROL DENEEN
Historian

BEV MANSFIELD
Scholarship

JUDY SIMMONDS
Membership

**DIANE MATSON &
JUDEEN REESE**
Newsletter

SANDRA MAERZ
Nominations



Surrounded by **FRIENDS**

Dear Friends,

The Stoughton Hospital Foundation is continually grateful for the wonderful support we receive annually from our generous **Circle of Friends**.

In the past several years, your donations have supported the renovation and expansion of the emergency and urgent care departments, laboratory, registration and lobby areas. Your support also helped purchase televisions for all waiting areas throughout the hospital and clinics, whiteboards and televisions for individual patient rooms, the acquisition of new exercise equipment in the cardiac rehabilitation area and, this past year, the construction of the new Wellness Garden!

Thank you to ALL who helped Stoughton Hospital continue to provide exceptional personalized service, close to home!

In good health,
Stoughton Hospital Foundation



Stoughton Hospital Foundation Board

Standing, left to right:

JUDY KNUTSON
Director

TERRY BRENNY
Stoughton Hospital
Past President/CEO

STEVE SWANSON
Director

MARY LINK
Past Foundation Director

ANDREA SPETH
Director

TOM PERTZBORN
Director

Seated, left to right:

MATT ROETHE
Director

MEG VEEK
Secretary/Treasurer

BRAD SCHROEDER
President

JESSICA PHARO
Vice-President

MIKE DANIELS
Director

Not Pictured:
ANNE STATON
Director

Stoughton Hospital **DONORS**

We greatly appreciate and recognize our 2017-2018 generous donors; however, for the purpose of this report we are recognizing those who have given a gift of \$500 or more during this past fiscal year [October 1, 2017 – September 30, 2018]. Please know, each donation is deeply valued as we further our mission to provide safe, quality healthcare with exceptional personalized service. Thank you, friends.

Jim and Michelle Abey
Dr. Richard and Sue Albright
Bill Amundson
Dr. Thor and Beth Anderson
Beam Healthcare/Dr. Sarjoo Patel
Dr. Donald Beresky
Eugene Bjoin
Terry and Carolyn Brenny
Amy Brown
Edwin E. and Janet L. Bryant Foundation
John Burns
Conant Automotive/Joe Conant
Cress Funeral & Cremation Service
Dr. Steven Diebold
Endres Mfg. Company Foundation
Epic
Thomas Fendrick & Shelley Moffatt
J.H. Findorff & Sons, Inc.
First Business Bank
Jerry and Judy Furseth
Globalcom Technologies
Jerry and Judy Gryttenholm
Gunderson Funeral & Cremation Care
Dan and Jodi Hanson
Gretchen Hennessy

Amy Hermes
Dr. Orin Hermundstad
Bruce Hund
JPC Foundation
Kahler Slater
Paul LaZotte
Dr. Jonathan and Sylvia Lewis
Zach and Teresa Lindfors
Steve and Mary Link
John and Nancee Linnerud
E. David Locke Family Foundation
Madison Radiologists, S.C.
Dr. John and Suzanne Maher
Bill and Bev Mansfield
McFarland State Bank
Dan and Cindy McGlynn
Joseph and Nancy Moskal
Moyer's Inc./Jeff Moyer
Patricia Murphy
Craig and Karen Myers
Dr. David and Ann Nelson
David and Liz Nelson
PARA Healthcare Financial Services
Paratech Ambulance Service
Partners of Stoughton Hospital

Tom and Abby Pertzborn
Scott and Jessica Pharo
Quam's Marine & Motor Sports
Quarles & Brady LLP
Timothy Reilley and Janet Nelson
Rotary Club of Stoughton
Dee Schammel
Audrey Schneller
Dr. Aaron and Karen Schwaab
Greg and Dawn Shaw
Shillelagh Foundation
Skaalen Nursing & Rehabilitation Center, Inc.
Southern Wisconsin Emergency Associates, S.C
Scott and Lynn Spangler
Paul and Andi Speth
David and Julie Stenbrotten
Stoughton Hospital E4E Team
Stoughton Hospital
Dwayne and Tina Strandlie
Suby Group/John Suby
Sveum Family
TRICOR Insurance
Dr. Warren and Aili Tripp
Union Bank & Trust Company
The Wahlin Foundation, Inc.

Lucy J. Wall
Bill Weber and Laura McDonald-Mays
Donn Wheeler and Kenlynn Pokrandt-Wheeler
Troy and Lynn Wieser
Wisconsin Hospital Association, Inc.
Craig and Joni Wood
Walter and Tracy Wurtzler

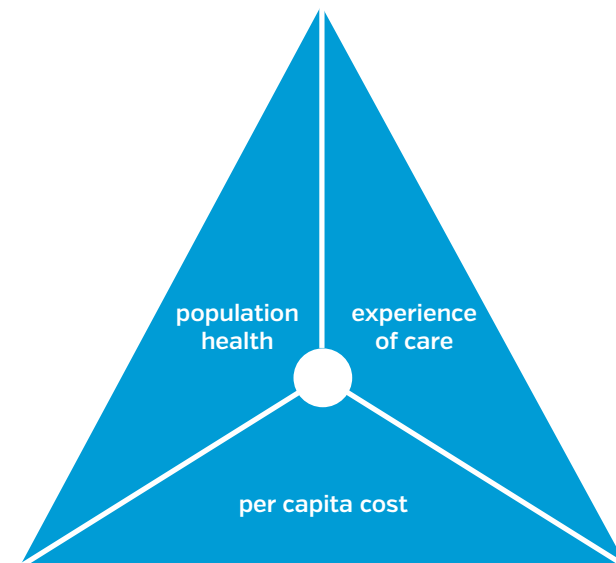


Looking Ahead **TO 2019**

TRIPLE AIM

Stoughton Hospital is committed to improving the health of the communities we serve, elevating the patient's experience of care, and working to reduce costs.

We will continue to build upon the relationships we have established, enhance our health screenings, and engage our employees in helping to identify cost savings opportunities. We're excited for the future and thank our community for their continued support, dedication and loyalty to Stoughton Hospital.



900 RIDGE STREET
STOUGHTON, WI 53589

608.873.6611

WWW.STOUGHTONHOSPITAL.COM

